

High-performance adhesive for larger areas (special foil carrier)

Sigan Elements



Metal reinforced adhesive tape for rapidly installing new PVC floor coverings onto existing flooring

Applications:

Dimensionally stabilising, metal-reinforced special adhesive system. Double-sided adhesive, for installing LVT and PVC tile onto existing floor coverings. Once installed the floor coverings can be removed at a later time without residues, guaranteed! Suitable for areas of any size. Sigan Elements is resistant to cleaning agents, spray extraction cleaning and professional vacuum cleaners (although pooled water should be avoided). Sigan Elements is also suitable for underfloor heating and permits usage under high loads and traffic such as chair castors. For interior use only.

► Suitable for*:

Resilient floor coverings:

- Luxury Vinyl Tiles up to 3.2 mm
- PVC tile products

Textile flooring:

- Barrier matting with PVC backing
- Flotex

► Suitable on*:

- PVC floor covering (homogeneous / heterogeneous)
- CV floor covering
- PVC luxury floor covering
- PVC-coated cork floor covering
- Treated linoleum floor covering
- Rubber flooring
- PUR and epoxy resin coating (smooth, non-porous, at least 3 months old)
- Polyolefin floor covering (PO floor covering)
- Artificial stone, terrazzo flooring (smooth, without height difference)

Note: For additional combinations of floor covering and subfloor obtain technical advice.

* See important notes



for	Luxury Vinyl Tiles and PVC tiles
ON	existing smooth floor coverings

Ingredients: Metal-reinforced special film carrier, acrylic copolymers, wetting and defoaming agents, paper.

Product features & properties:

- Dimensionally stabilising
- Quick and easy installation
- Floor covering immediately ready for foot traffic and loading
- Immediately weldable
- PVC luxury floor covering and PVC tiles can be installed without joints
- Future removal without residues
- Solvent-free
- Does not dry out or become brittle
- EMICODE EC 1 PLUS / Very low-emission

Technical specifications:

Packaging:	Carton
Packaging content:	Sigan Elements: 75 cm x 25 m Sigan Elements Tape: 5 cm x 25 m
Shelf life:	min. 2 years
Colour:	silver / grey
Substrate temperature:	min. 15 °C
Open time:	none
Working time:	unlimited
Load application:	immediately after installation
Welding/joining seams:	immediately after installation

Preparation:

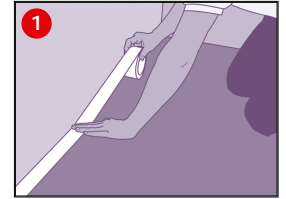
For smooth substrates:

- ▶ The substrate must be sound, flat, permanently dry, free of cracks, clean and free of materials that could impair adhesion.
- ▶ Test the substrate in accordance with applicable standards and bulletins and report any deficiencies.
- ▶ Damp wipe the sub-surface.
- ▶ If there are oily residues, wipe the floor with a mild, diluted detergent, and then neutralise well with water (soak it up).
- ▶ Do not use any basic cleaners and do not sand. Obtain technical advice if necessary.
- ▶ Cut out damaged areas in the existing floor covering (e.g. tenting joints, holes, impressions) and fill with low-slump cementitious non-sanding levelling compound (no dispersion levelling compounds). Then prime with a film-forming dispersion primer and allow to dry completely.
- ▶ Trial bonding: Always perform trial bonding. Rub Sigan Elements firmly onto the substrate. Degrease substrate and repeat trial bonding if bubbles form or Sigan Elements detaches from the substrate. Obtain technical advice in case of insufficient bonding.
- ▶ Unpack the floor covering in small stacks and allow to acclimatise for 48 hours and according to the manufacturer's recommendations. Allow Sigan Elements to acclimatise for at least 24 hours before the floor is installed.

Application:

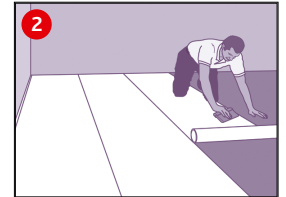
1 Installing 50 mm Sigan Elements Tape:

- ▶ Apply Sigan Elements Tape along walls and doors, a) to compensate for uneven walls, (b) for increased adhesive strength in the edge zones, c) for bonding at difficult to access areas.
Attention: Use only the Sigan Elements Tape enclosed (removable without residues!).
- ▶ Do not pull off the protective paper yet.
- ▶ Do not overlap the Sigan Elements tape, but mount edge to edge, or cut back to a butt-joint where overlapping.

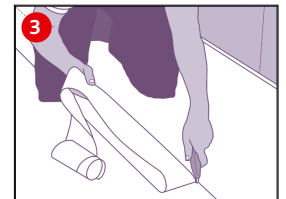


2 Installing 750 mm Sigan Elements Roll:

- ▶ Install Sigan Elements in running direction of the new floor covering preferably with overlap. To this end, roll down without pressure and section by section; rub down without bubbles in unrolling direction. Now unroll the next section in the same manner and rub down until the entire sheet has been installed. If air becomes trapped, roll back the roll for the distance required and repeat the rub-down process without bubbles. Then cut back to the joint using a hooked knife, or roll out edge to edge directly (max. 3 mm space permitted, no overlaps). Do not damage the substrate.
- Attention: Never apply the grey matted side (covered with protective paper) onto the subfloor.**
- ▶ Sigan Elements may overlap Sigan Elements Tape but must be cut back to butt-joint.
- ▶ Only roll out the same amount of Sigan Elements as the amount of floor covering that will be installed on the same day.



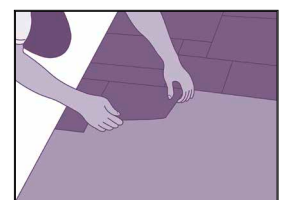
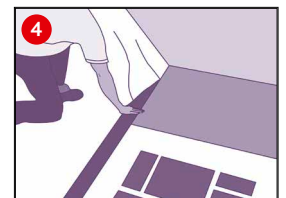
- ### 3
- ▶ Install the last run of Sigan Elements starting from the wall. Cut back the resulting overlap to fit edge-to-edge using a hooked knife. Do not damage the substrate while doing this.
 - ▶ Wrap any remaining Sigan Elements roll with protective paper (edge protection and protection against dust).



4 Installing the floor covering:

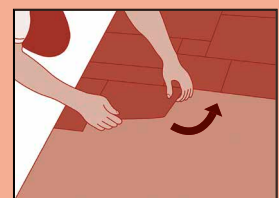
Luxury Vinyl Tiles and PVC tiles:

- ▶ Measure the room, divide into planks/tiles. Mark the starting point of the row of planks/tiles and, if applicable, wall frieze, with a suitable pen (soft pencil or regular DVD marker) on the protective paper.
- ▶ Place a steel rail along the measuring points and align.
- ▶ Pull the protective paper away from the Sigan Elements horizontally and straight up to the steel rail.
- ▶ Tear off the protective paper along the steel rail at an angle toward the top. The straight line this created serves as reference line of the first row of planks / tiles.
- ▶ Alternatively, use Sigan Elements Universal Tape to create a starting line.
- ▶ Stack the protective paper and roll together (minimises the waste volume).
- ▶ Install the planks / tiles along the reference line without stressing and press down firmly by hand.
- ▶ Continually pull back the protective paper horizontally and straight. Install the floor covering as described. If the installation process is interrupted, the protective paper can be reapplied as protection for the Sigan Elements.
- ▶ After installation, rub / roll down firmly crosswise over the whole area.



Sigan: Removing floor covering without residues – without damaging the substrate.

- ▶ Carefully detach tiles and planks from Sigan (cut into strips first if necessary); do not damage the substrate!
- ▶ Pull off Sigan at a flat angle after the complete removal of the tiles or planks. No adhesive residues will remain on the substrate when using Sigan! The floor covering removed cannot be reused.



Important notes:

Store in the standing position in a dry and cool place, away from direct sunlight. Rewrap opened rolls in protective paper.

- ▶ PVC tiles and panels as well as textile floor covering with PVC backing that meet the dimensional changes according to EN 434 or EN ISO 23999 are suitable.
- ▶ PVC tiles (up to 65 × 65 cm) and PVC luxury floor coverings with respective dimensional change characteristics can be installed without jointing/welding.
- ▶ Only PVC luxury floor coverings and PVC tiles without optically detectable inherent tension or bulging may be bonded.
- ▶ Welding/jointing can be performed immediately after bonding.
- ▶ Rising humidity from the subfloor can't pass through the Sigam Elements foil carrier. Enclosed moisture could cause damage to the construction underneath.
- ▶ **Further substrates:**
 - Levelling compound → Sigam Elements Plus with Planus
 - Wooden floors (untreated), chipboard P3/P5/P7, plywood/MDF panels → Sigam Elements Plus with Planus
 - Ceramic tiles → Sigam 2

Protection of the Workplace and the Environment:

The product does not require any special labour protection measures. For reasons of working hygiene, we recommend avoiding eating, drinking and smoking during processing of this product. Store out of the reach of children.

For more information refer to www.uzin.com or contact +49 731 4097-0

Disposal:

Empty shells and the cardboard packaging can be recycled. Material remnants can be disposed of as household waste.

Warranty:

UZIN grants a 5-year warranty for all properties claimed in the processing instructions.

Sigan Elements complies with VOB Part C, Pt. 2.7 Adhesives: "They form a solid and permanent connection and neither affect the floor covering nor the substrate and do not cause any nuisance through odours after installation".

- Follow the generally acknowledged rules of the trade and of technology for the installation of floor covering of the respective applicable standards (EN, DIN, VOB, OE, SIA, Technical Bulletin TKB-12) Suitable bonding tests must be performed at any rate on site before processing.

The warranty becomes void if:

- Sigam Elements is used for exterior applications, in operating theatres or automotive manufacturing.
- Unusual influences, and in particular those of a chemical or mechanical nature, affect the product.
- In case of any utilisation or processing that deviates from the laying instructions.
- Discolouration occurs due to chemical reactions between floor covering and substrate.
- If joints or warping develops due to dimensional changes on the floor covering.
- The floor covering was installed stretched and under tension.
- Dampness affects Sigam Elements.
- Installation was performed below 15 °C (on the floor!).
- Sigam Elements is used in areas with increased thermal loads (e.g. conservatories).
- no adhesive trials are carried out.